



LOCATION, SERVICES AND VARIETY

# Inspiring facilities for your company



# Light and colour at Vallila Corner

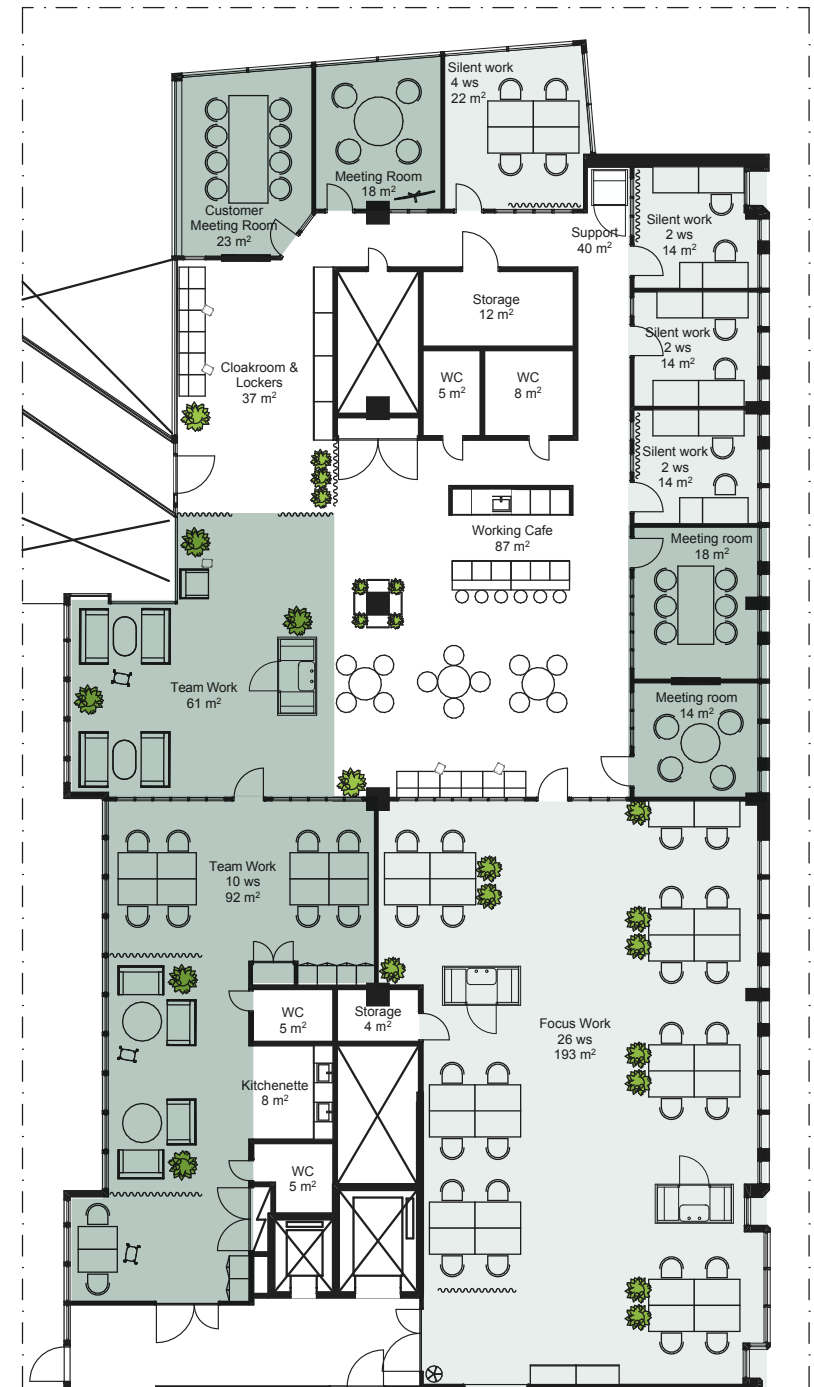
Vallila Corner offers modern setting in a rugged urban environment for companies and communities of all sizes. The beautifully renovated office building at the heart of Vallila office district – only about three kilometres from the city centre of Helsinki – offers you a touch of luxury in your daily life: plenty of light and room to breathe. Vallila Corner is a beautiful amalgamation of elegant details and carefully planned, functional environments for daily work.

Vallila Corner offers good services. During your workday, you can take a minute to relax on a terrace or enjoy a lunch made with the season's best ingredients. We also provide facilities for meetings and private events.

Find out more by browsing further. We are happy to provide you with additional information: our number one priority is to offer your company facilities that keep inspiring you day after day. **We tailor our facility solutions to your wishes, ensuring that the final results perfectly serve the daily work and business of your company.**

**vallilacorner.fi**

Example, 694 m<sup>2</sup>



# Tailor-made business premises

Vallila Corner offers unique and flexible facility solutions from 19-square-metre office rooms to more than 2,000-square-metre headquarter premises. We always aim to find a solution to your company's changing facility needs. Sometimes, our satisfied long-term customers have even moved into more suitable facilities inside the same building as the requirements of their business change. **We will ensure that the facility solutions, including factors such as indoor surfaces, will meet all your wishes and needs!**



## Milieu beyond compare

Vallila Corner brings functionality to daily life. The bright and airy rooms nourish ideas, and services are always available. Our facilities allow combining office work with light manufacturing industry when necessary: even though most of our premises comprise **high-quality, stylish office facilities**, the property also has **a cargo lift** and **a loading deck** that serves even the more demanding logistics needs. This allows you to include other functions to your office facilities. **Some of the premises in the building can be turned into laboratory and research premises. Very convenient!**



# Wide range of services – comfortable daily life!

Nourishing and tasty lunches, easy parking, smart biking solutions, comfortable meeting facilities and a great deal more! At Vallila Corner, things just work and daily life goes smoothly – thanks to the excellent user services.

This spread shows the highlights of the current service offering of our property. **When developing the services, we also carefully listen to the wishes of our tenants.**



## MEETING FACILITIES

Several well-equipped meeting facilities of different sizes.  
A large auditorium with seating for 85 people.

## PARKING

The property's own parking hall accommodates around 200 cars.  
The city block also has a large parking hall by Aimo Park.

## ELECTRIC CAR CHARGING

Charging points can be found in connection to the property's own parking spaces. Aimo Park's parking hall also offers a charging option, and public charging stations are available near the property's main entrance.

### **SERVICES FOR CYCLISTS**

Easily accessible bike racks in front of the building and in the parking hall. High-quality dressing and shower facilities.

### **LOBBY SERVICES**

The lobby service of Vallila Corner assists all customers and visitors on weekdays from 8 am to 4 pm.

### **MULTI-PURPOSE TERRACE**

The recently renovated terrace is a meeting place for all the people working in or visiting the property, inviting them to relax, re-energise and maybe even play a few games.



### **LUNCH RESTAURANT**

The famous salad buffet of Dylan, made with the season's fresh ingredients, is a cornerstone of a busy daily life. Catering service is also available for meetings and other events.

### **COFFEE SHOP**

Deli by Dylan serves energising coffee breaks and tasty snacks. Outside the restaurant's opening hours, the Deli services are available as self-service 24/7





## Close to everything

The office building of Vallila Corner has a central location only about three kilometres from the city centre of Helsinki, in the corner of Kuortaneenkatu and Elimäenkatu. Vallila is an excellent place to put down your roots: the former industrial hub turned into a lively urban city district offers **a wide range of services, convenient traffic connections and nostalgic history.**

**You can reach us easily by public transport, by car or by bike.**

10 m  
to city bike  
station


200 m  
to tram stop  
(e.g. lines 1, 6T, 7, 9)

1,2 km  
to Sörnäinen  
Metro Station

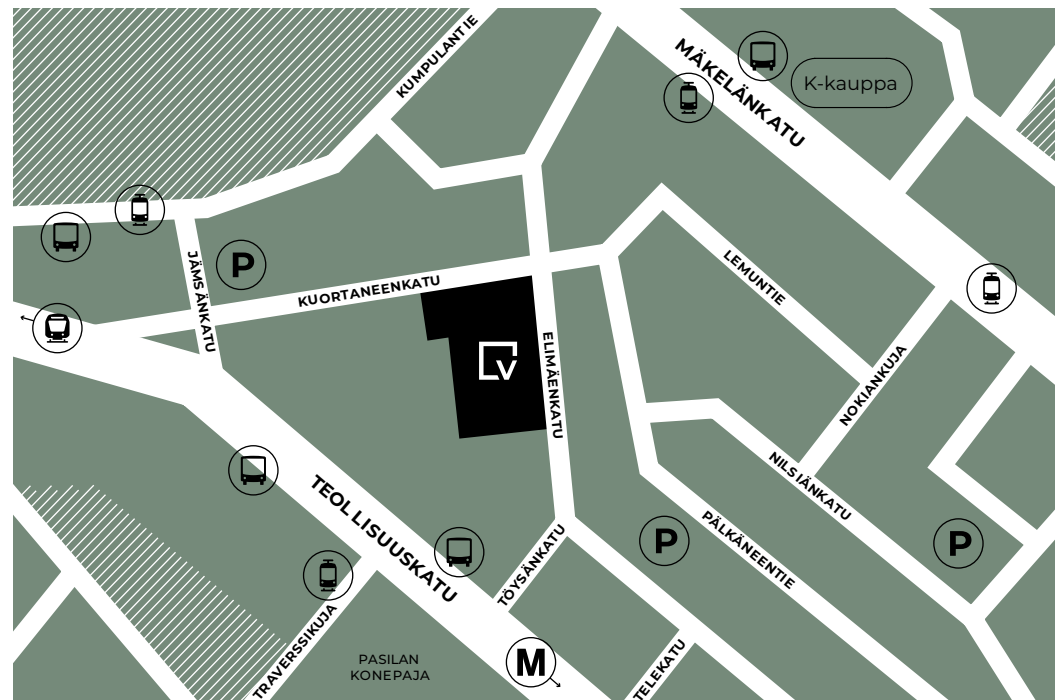
200 m  
to bus stop  
(e.g. lines  
65, 70, 611, 614, 615)

1,2 km  
to Pasila  
Train Station

16 km  
to Helsinki  
Airport



Vallila Corner's  
BREEAM In-Use  
environmental certification  
is on the second highest  
level, Excellent.



COME TO VISIT US:

Book your visit  
right away!

Many can now feel the attraction of Vallila Corner. Don't wait any longer, see the available business premises we offer online at [vallilacorner.fi](http://vallilacorner.fi) and book a personal visit. **The best spots are going quickly – we will help you find your own!**

Light and space to work

# VALLILA CORNER

## FURTHER INFORMATION AND PRESENTATIONS:

Krista Sipilä

+358 40 589 2270

[krista.sipila@areim.se](mailto:krista.sipila@areim.se)

Jone Riiheläinen

+358 40 767 2764

[jone.riihelainen@areim.se](mailto:jone.riihelainen@areim.se)

SEE THE AVAILABLE FACILITIES AND CHOOSE YOUR FAVOURITE

[vallilacorner.fi](http://vallilacorner.fi)